

Remote Control Installation Instructions

FBRC50

This remote control is designed to separately control your ceiling fan speed and light brightness.

There are four buttons(Hi,Med,Low,Off)to control the fan speed and off.

The light button will control the lights brightness dimmer and off.

The red indicator on the transmitter will light when the button is pressed.

1.SETTING THE CODE

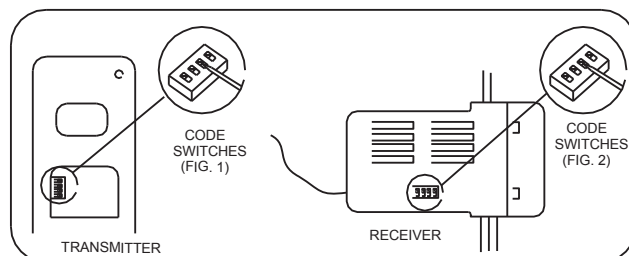
This unit has 16 different code combinations. To set the code.Perform these steps.

A.Setting the code on the transmitter.

- Remove battery cover.Press firmly below arrow and slide battery cover off.
- Slide code swithes to your choice of up or down position.(Factory setting is.all up. Do not use this position. Use a small screwdriver or a ball point pen to slide firmly up or down (figure1).

B.Setting the code on the receiver.

- Slide code swithes to the same positions as set on your transmitter (figure2).
- Replace battery cover to transmitter.



2.INSTALLING RECEIVER IN CEILING FAN

A.Safety precautions:.

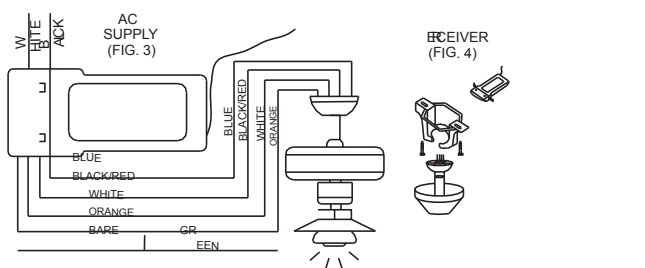
WARNING:HIGH VOLTAGE!Disconnect source ofelectrical power by removing fuse or switching off circuit breaker.

Electrical wiring must meet all local and national electrical code requirements.

Household electrical power can cause serious injury or death!

B.Installing receiver in fan

- Remove electrical power from the circuit
- Remove ceiling fan canopy
- Disconnect existing wiring between ceiling fan and supply at electrical junction box.
- Make connections as follows,using the wire nuts supplied:
Connect BLACK control unit wireto BLACK supply wire(AC IN L)
Connect WHITE control unit wire toWHITESupply wire(AC IN N)
Connect WHITE control unit wire (TO MOTOR N)to WHITE fan wire
Connect BLACK control unit wire(TOMOTOR L) to BLACK fan wire
Connect BLUE control unit wire(FOR DOWN LIGHT) to blue light wire
Connect ORANGE control unit wire(FOR UP LIGHT) to Orange light wire
If fan or supply wires are different colors, have this unit installed by a qualified licensed electrician.
- Push all connected wires up into junction box.
- Lay the black antenna wire on top of the receiver, and put the receiver in the mounting bracket.
- Reinstall the canopy on the mounting bracket.



CAUTION:
Donot use fanspeedcontrol in canopies where the mounting is not as described in figure 4 of the installation instructions.

C.Install the other receiver from figure 5 in the Switch Housing/Bottom Cup

- Remove the Switch Housing/Bottom cap from the system
- If manual switches are present, cut wires from switches and remove existing internal components
- Install the new receiver components inside the Switch Housing/Bottom cap
- Connect all the connections with matching plugs and colors.
- Reinstall the Switch Housing on to the fan.

D.Restore electrical power.

3.OPERATING TRANSMITTER:

A.Install 9volt battery(not included).(Toprevent damage to transmitter, remove thebattery if not in use

B.Store the transmitter away from excess heat or humidity.

C.This remote control unit is equipped with 16 code combinations to prevent possible interference from remote units such as garage door openers, car alarm or security system. If your fan and light kit go on and off without using your remote control, change the combination code in your transmitter and receiver.

D.Operation buttons on the panel of the transmitter.

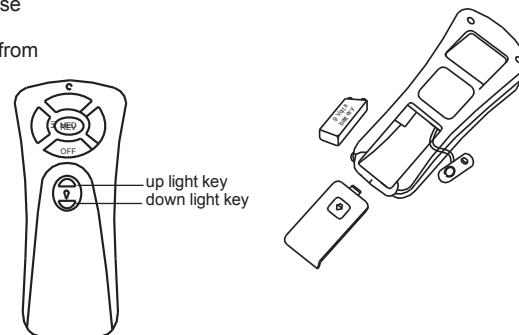
- HI key for fanhigh speed.
- MED key forfan medium speed.
- LOW key for fan low speed.
- OFF key for fan speedoff.
- REV key: this button will change rotation direction.

E.Light control

- Press up light key to turn on/off the up light.
- Press down light key to turn on/off the down light.
- Press and hold for dimming feature.

F.Memory function

If you turn off the light by wall control, it will memorize and restart automatically at the last fan speed and light brightness when turned on the next time.



4.TROUBLE SHOOTING GUIDE

A.Fails to operate:

- Power to receiver?
 - Reiceiver wired correctly?
 - Fan manual speed control in highest position?
 - Light kit switch turned on?
 - Good battery in the transmitter?
 - Code set to same code in both transmitter and receiver?
- B.Fan/light kit won't operate whenup close,butnot at 30 feet away.
try placing the black antenna wire higher,up through ceiling, outside the junction box

NOTICE!

Yourceiling fan andlightkitassemblymustmeet the following requirements:

Electrial rating:120V 60Hz 3.5A
MAX.motor amps: 1.0
MAX.light watts: 300-(Incandescent only)

CAUTION:

Ceiling Angel Should Not Exceed 30 Degrees.
For Mounting controller. Model UC-7067RC.